



UCLA

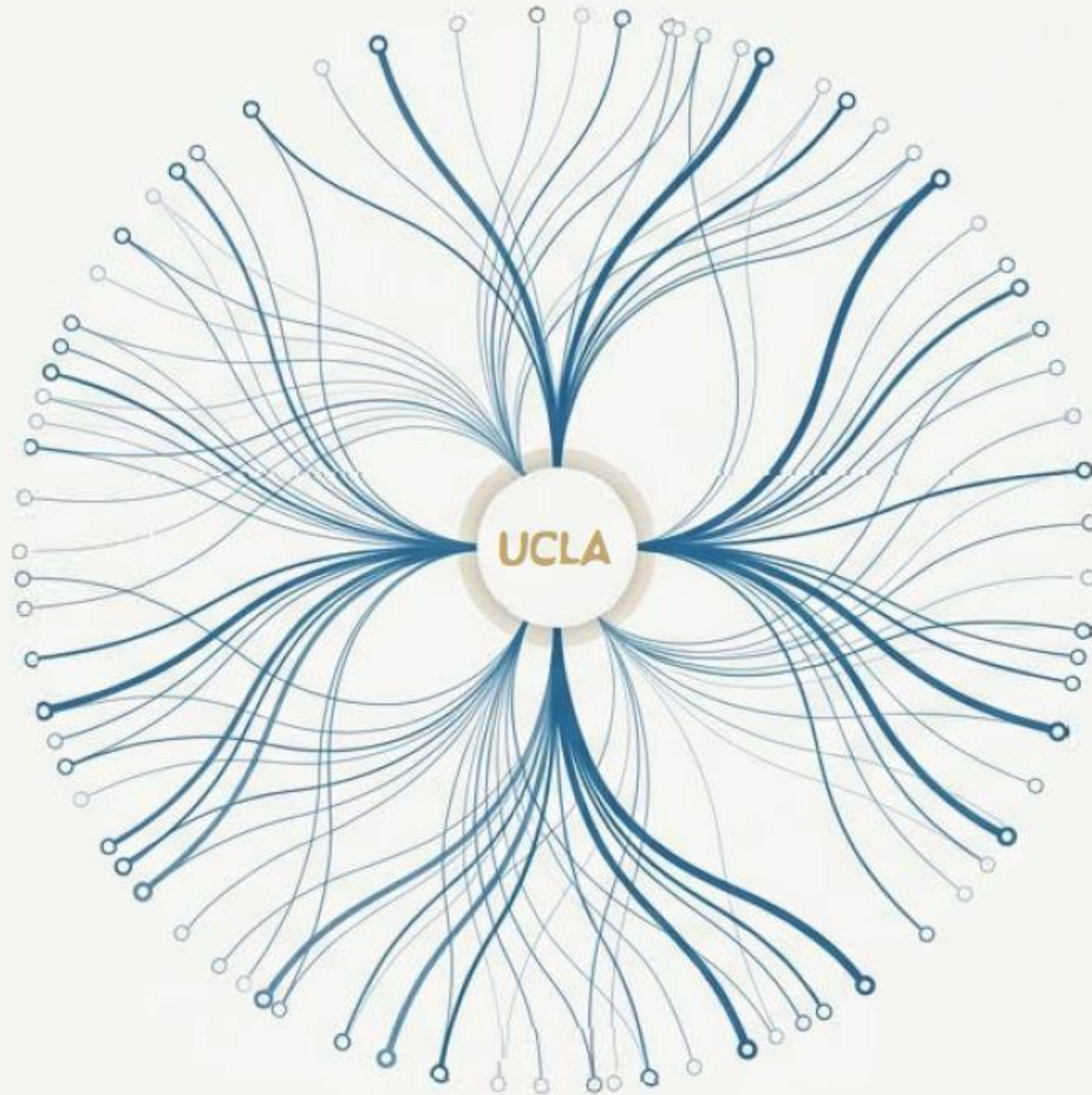
**Technology
Development Group**

Research & Industry *Alliances*

Accelerate Your Science: A Guide to Streamlined Material Transfers

New, faster pathways for sharing
research materials.

UCLA Research is Built on Collaboration



1,625

In the last fiscal year, TDG executed 1,625 agreements to facilitate the transfer of tangible research materials, data, and software. Each one represents a vital connection in the global scientific community.

Introducing New Tools in the Kit

To reduce turnaround times and get materials into your collaborators' hands faster, TDG offers a streamlined processes for outgoing material transfers. For common, low-risk transfers, you can prepare the agreement and collect signatures yourself, significantly reducing review time.

DIY MTA

Do It Yourself Material Transfer Agreement



For when you need maximum outgoing transfer speed and your transfer meets a clear set of criteria.

ITUA

Inter-campus Transfer & Use Acknowledgement



An expedited process to share research assets with other UC campuses.

Less Paperwork. More Research.

Your DIY MTA Eligibility Checklist

The DIY MTA can be used if **ALL** of the following conditions apply:



UCLA Origin: Material was developed in a UCLA lab with no third-party or external obligations.



Non-Human: Material is non-human in origin.



Excludes Stem Cells: Material is not composed of stem cells.



Tangible Only: Transfer does not include data or software.



Non-Profit Recipient: The Recipient Institution is a non-profit entity.

How to Use The DIY MTA

1

Complete the [DIY MTA Template](#) by filling out page 2, then collecting signatures from the recipient.

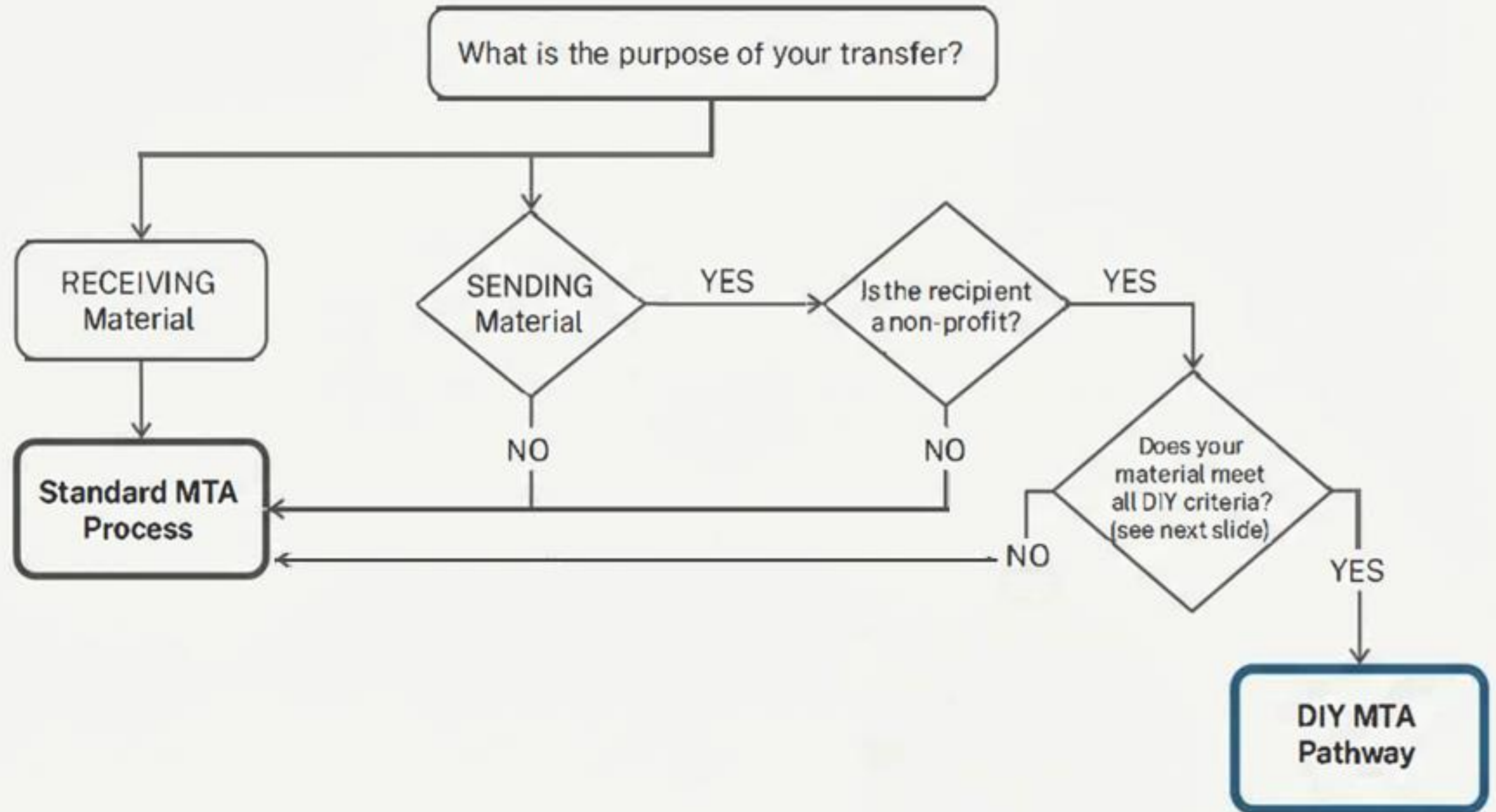
2

Submit an [OnlineMTA](#) request and upload the partially signed agreement so that the appropriate TDG signatory can countersign and upload the final version to the MTA Portal.

3

Send a copy of the fully executed to the Recipient.

Find Your MTA Pathway



DIY MTA: Fillable Sections

MTA

UC Case Number:

Provider
The Regents of The University of California, on behalf of its Los Angeles campus

Provider Scientist	Original Material

Recipient (the organization receiving the Original Material)	
Name:	
Address:	

Recipient Scientist	Shipping Address

Fee	Termination Date

ONLINE MTA Portal

select DIY MTA (Sending Material)

New Agreement

You are creating a new agreement. Before you can edit your agreement, you must first enter a title and choose the type of agreement.

Agreement Title:

Choose the Type of Agreement:

DIY MTA (Sending Material) ▾

Create New Agreement

[Cancel](#)

Your MTA Toolkit & Starting Point

Ready to begin? Use the links below to download the DIY template and access the OnlineMTA system.

**DOWNLOAD DIY
MTA TEMPLATE**



**SUBMIT AN
MTA REQUEST**



Questions?

Contact us at: UCLAMTA@tdg.ucla.edu